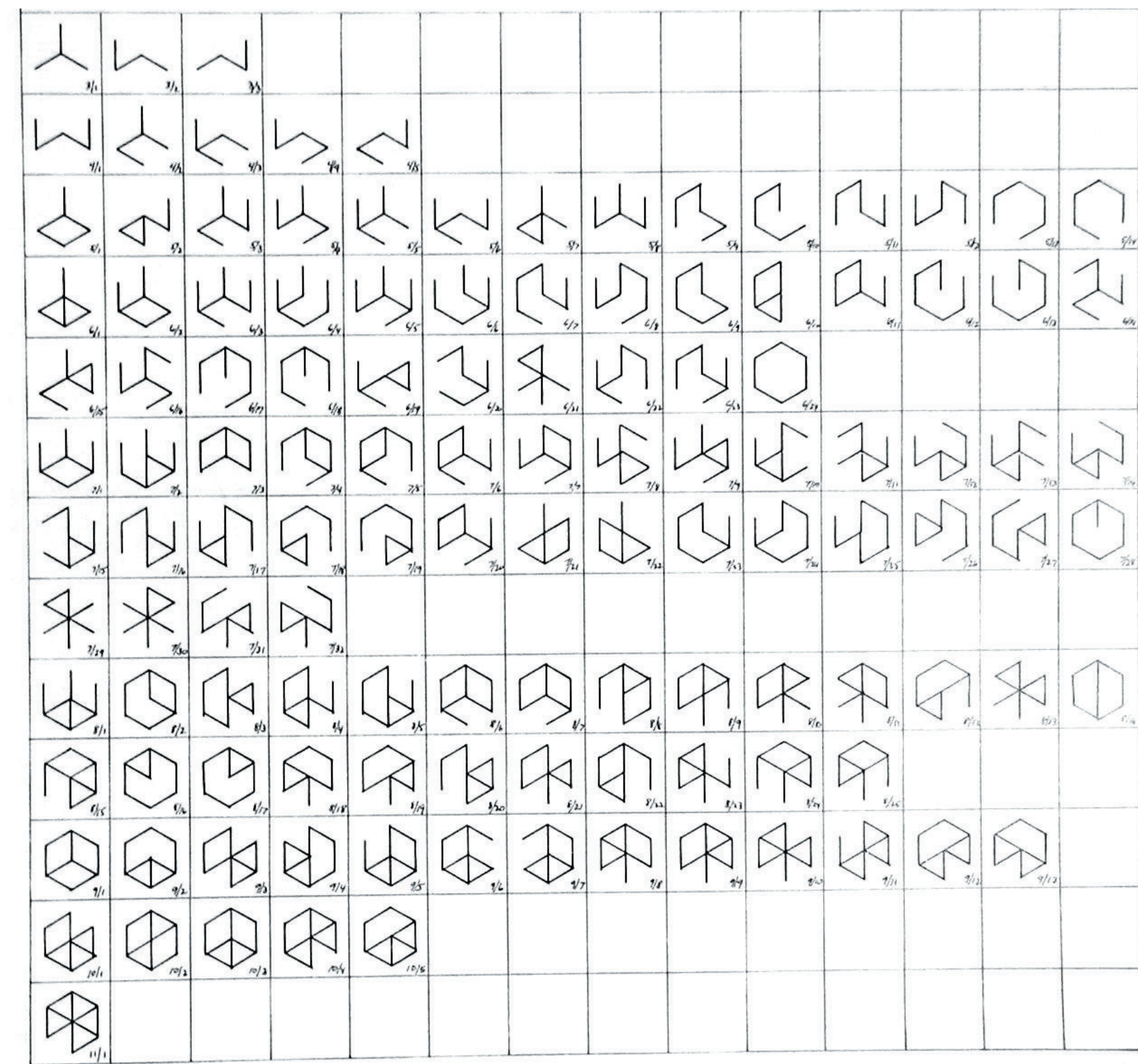
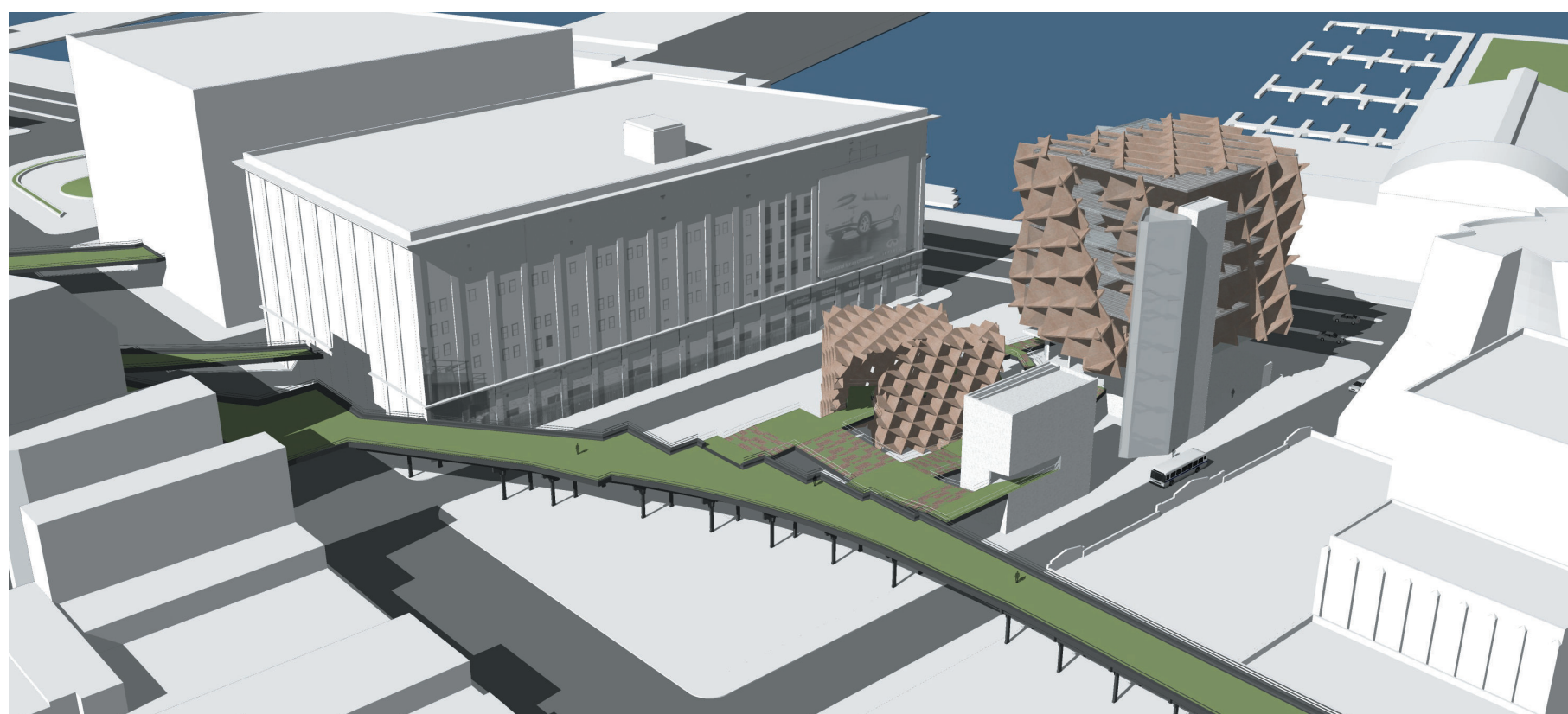
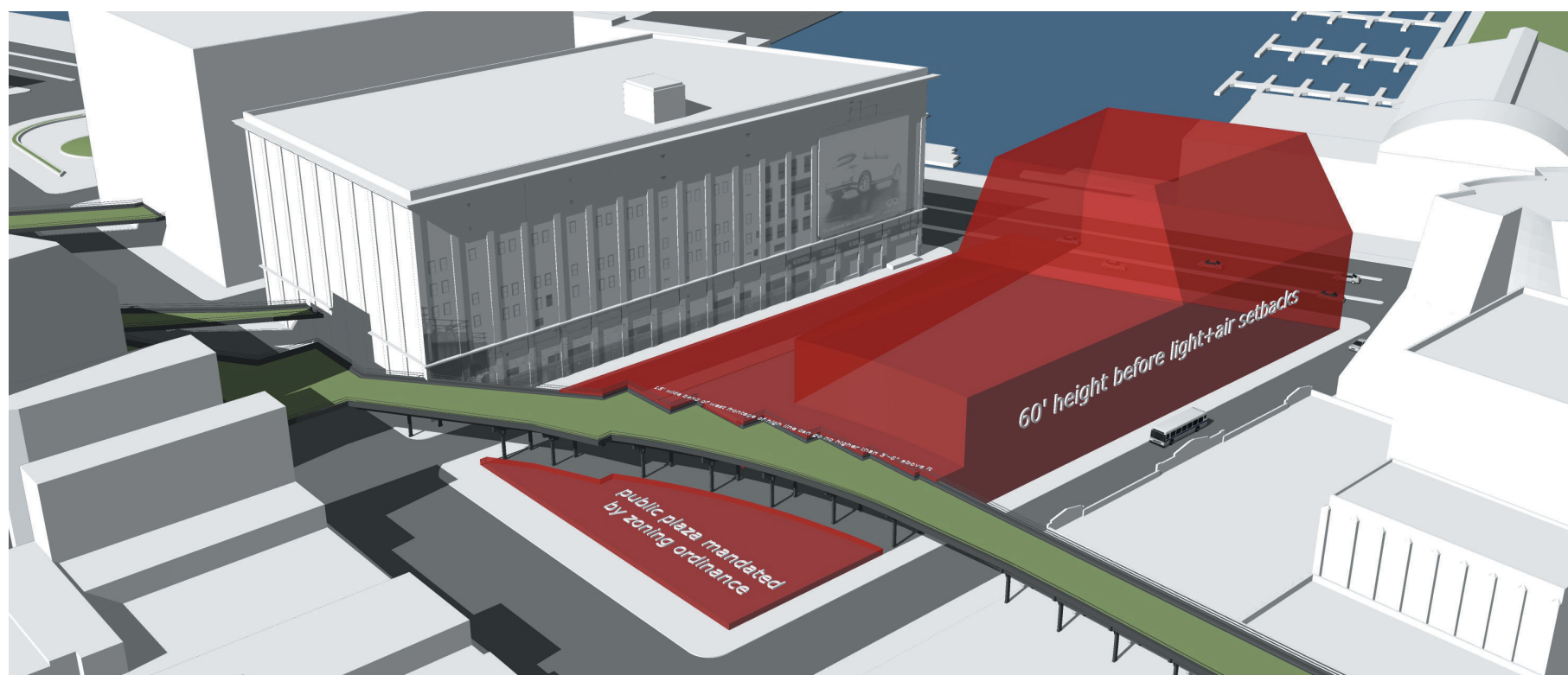
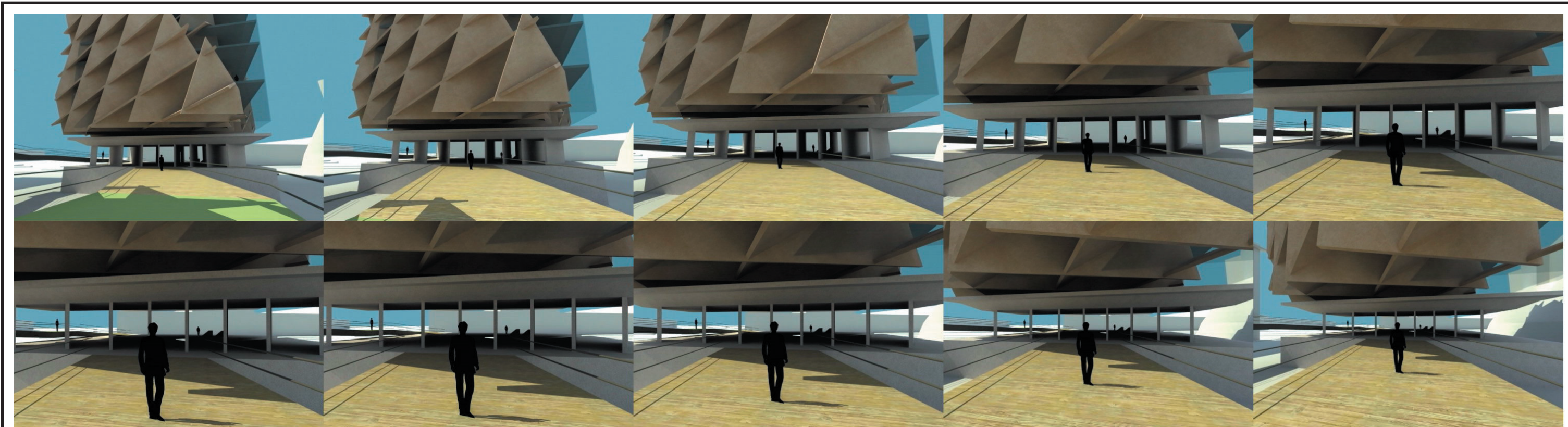
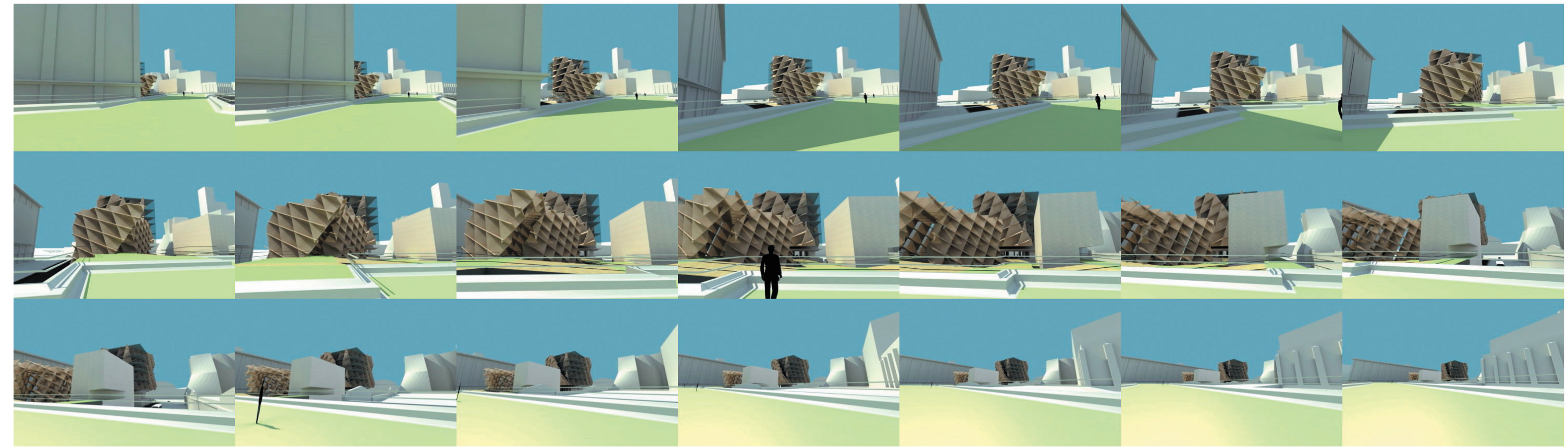
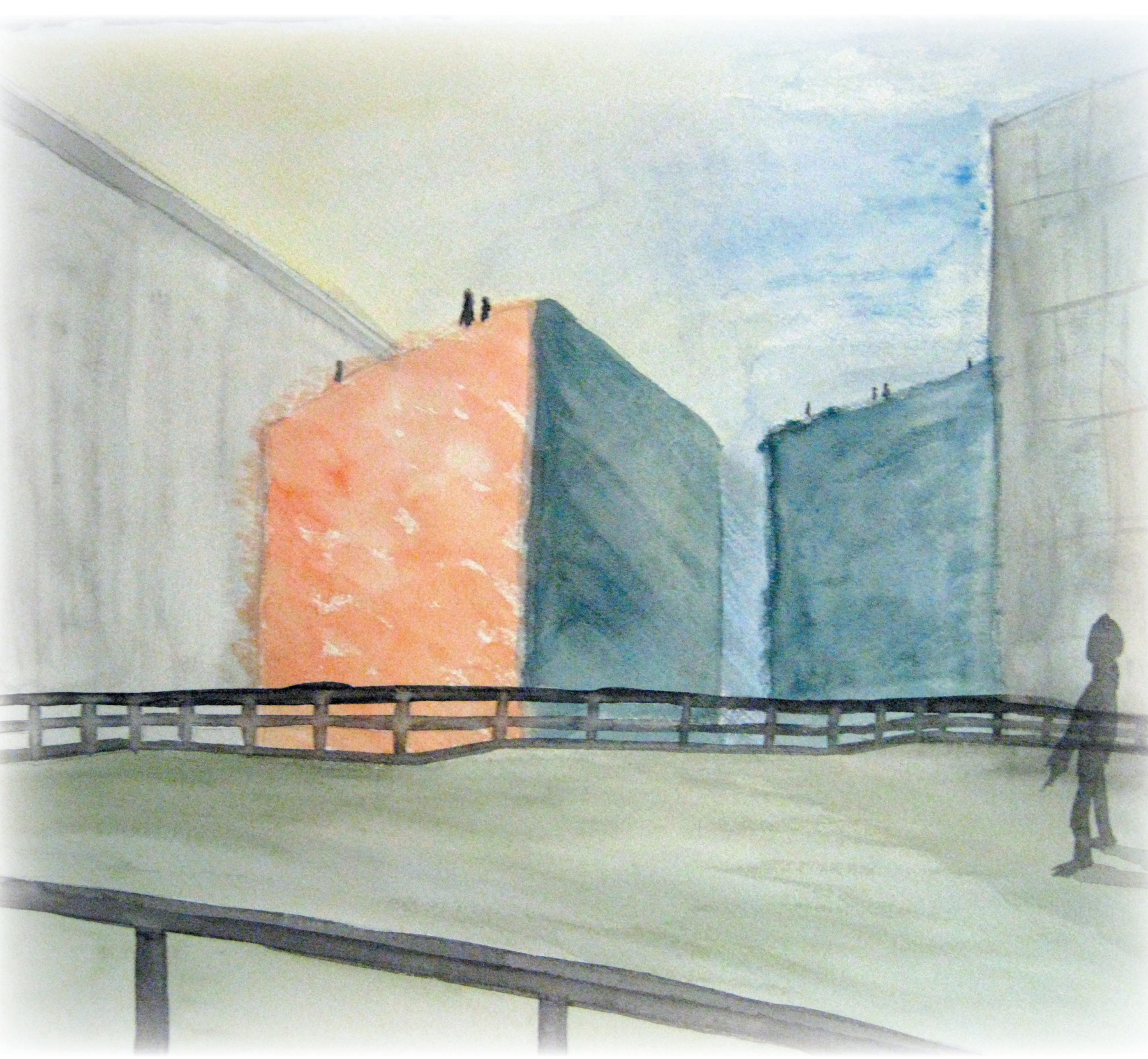
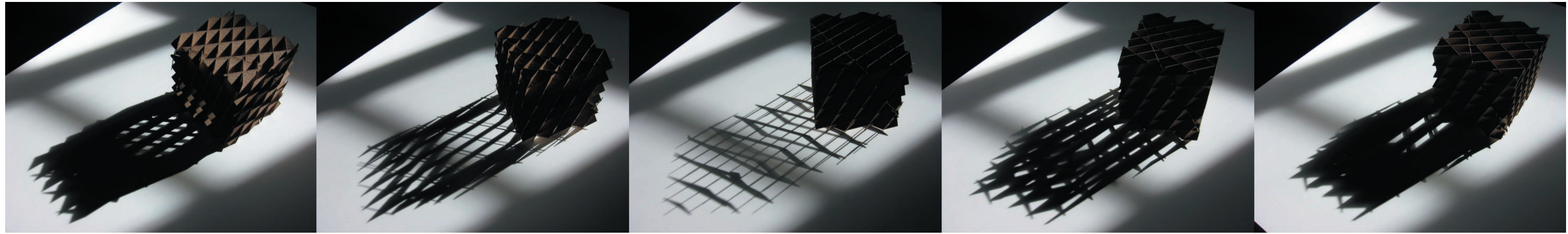


"art"

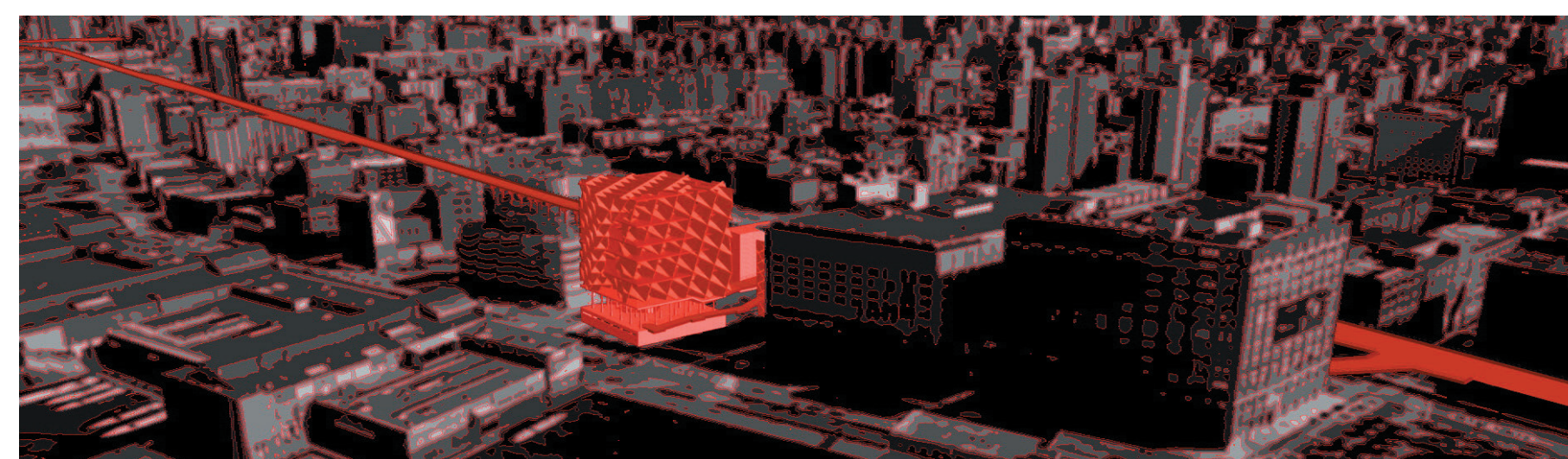
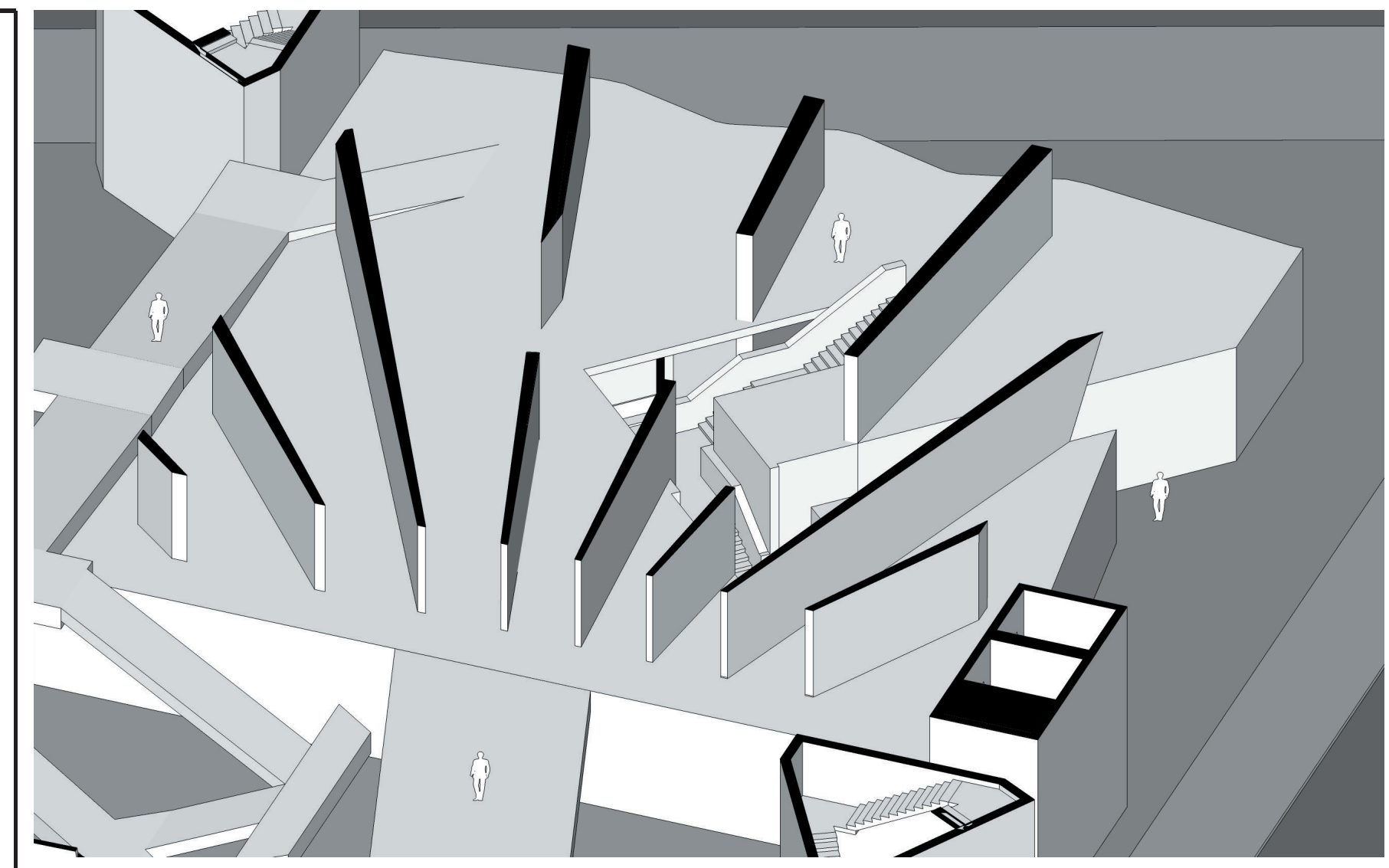
un-art



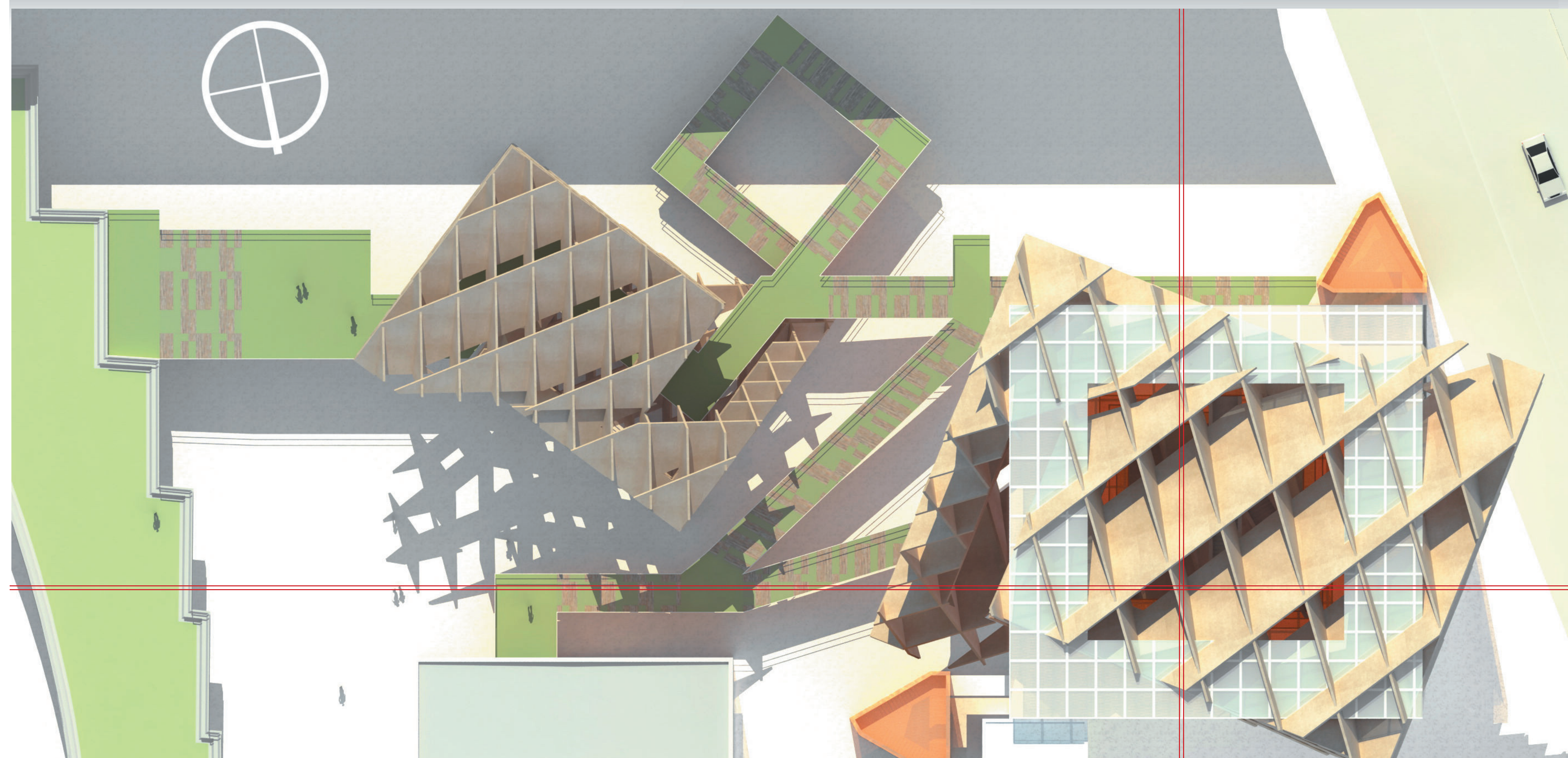
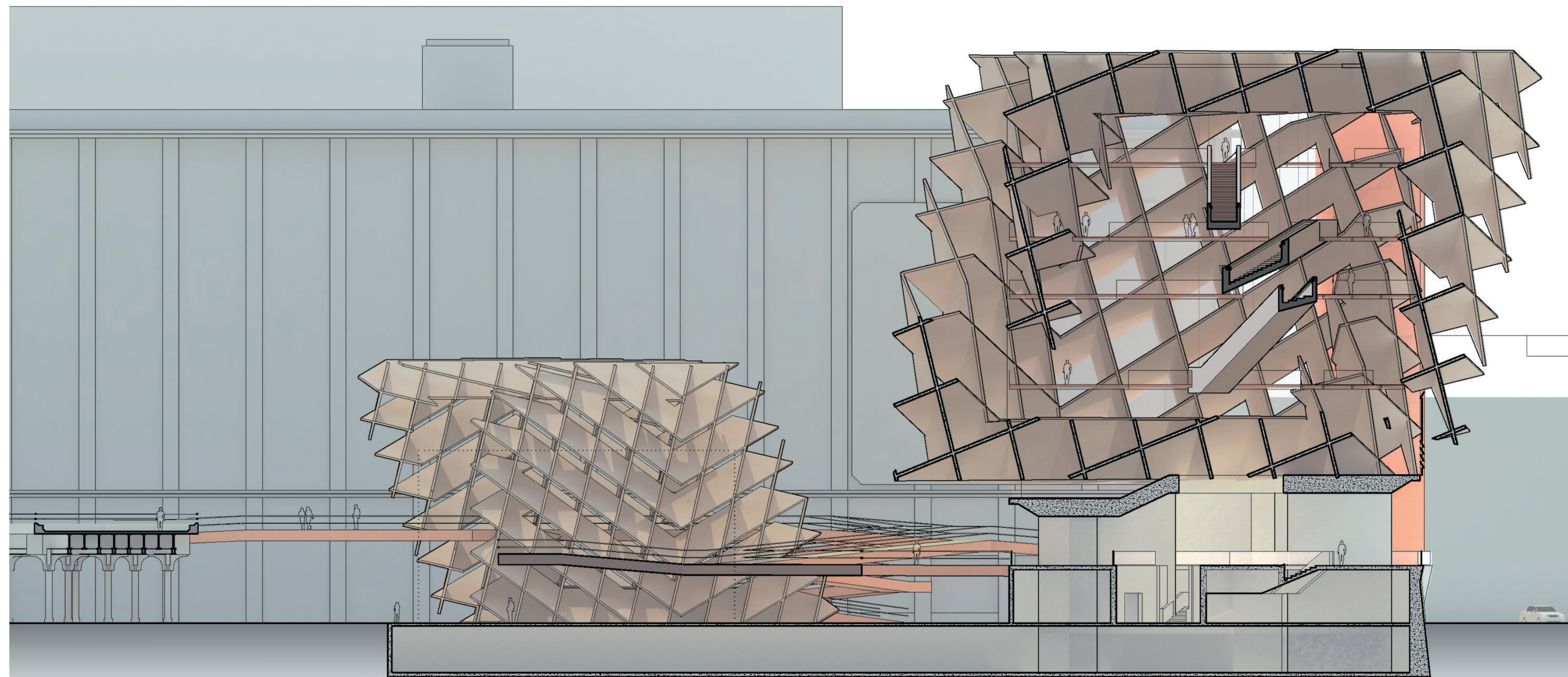
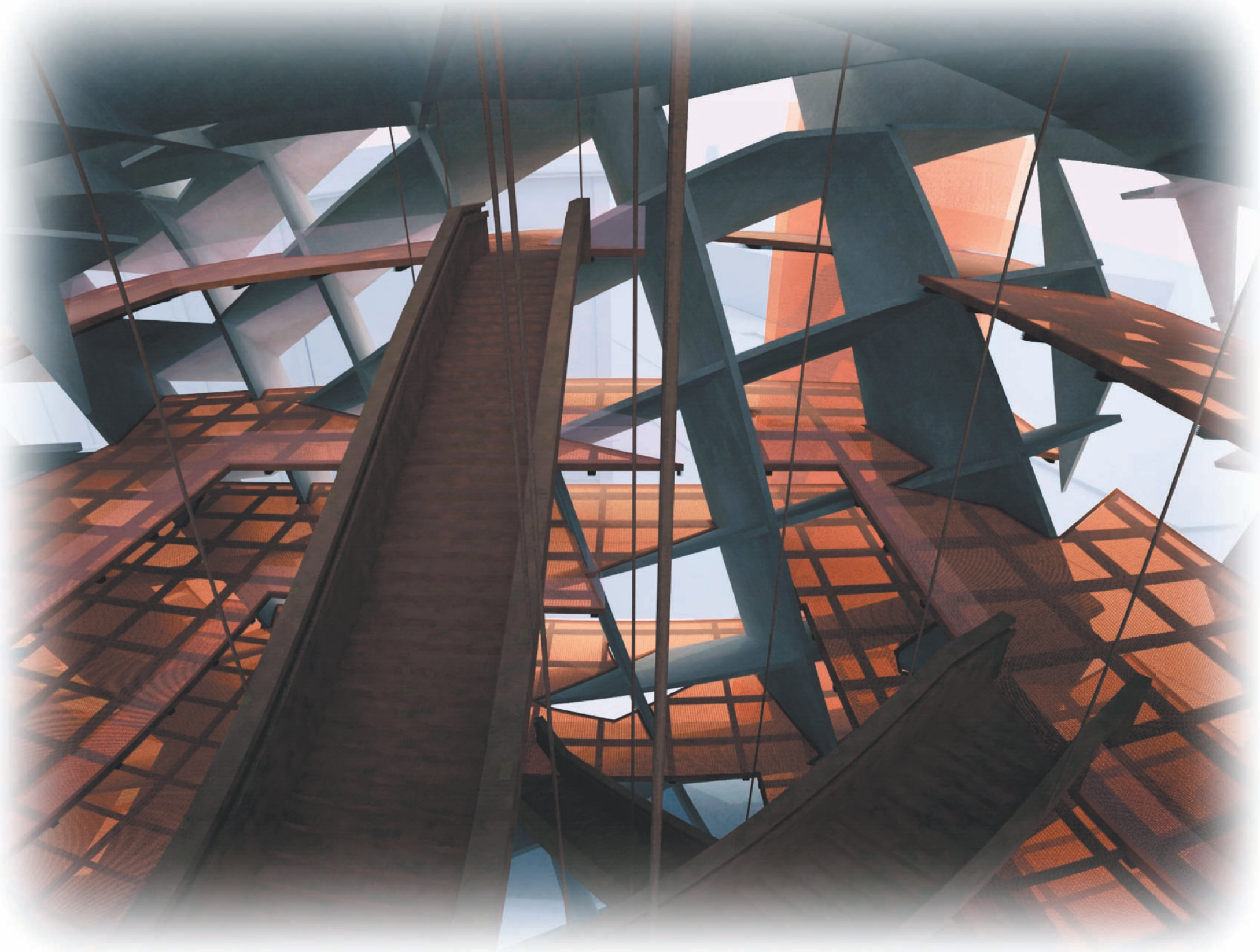
The moving image: we see it every day. Sequential frames spewing from the omnipresent television, a temporally and spatially condensed (as well as heavily edited) version of reality, are taken for granted – but the human mind forms intuitive connections between discrete inputs all the time.

For the museum commissioned to house this special program, we must take into account not only what type of art will be displayed here, but how the patrons and even the site itself should become a part of the experience – how people view the museum around them, and others passing by or watching projected imagery, impacts their understanding of both the nature and quality of space they inhabit.

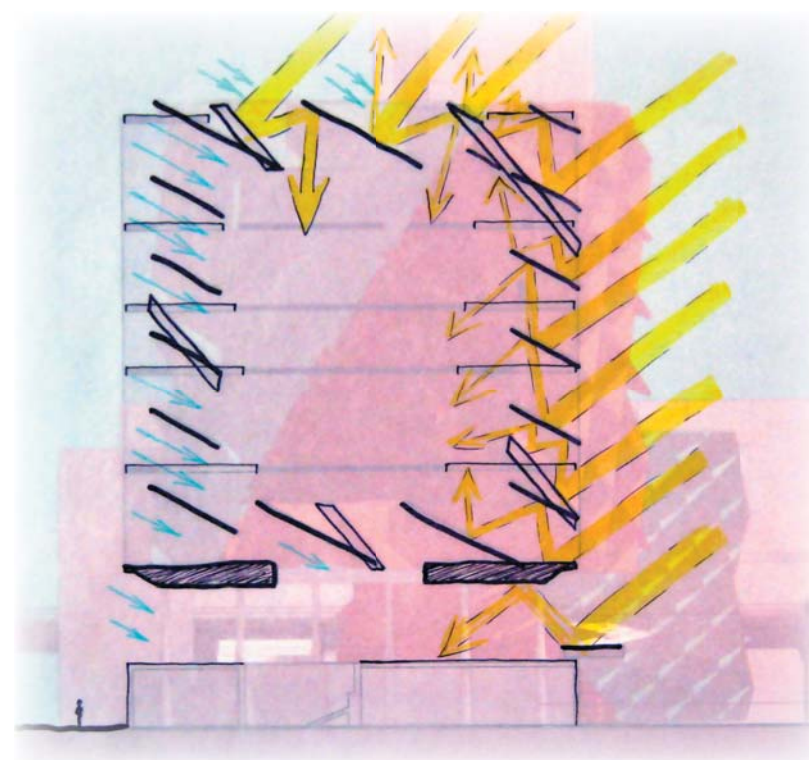
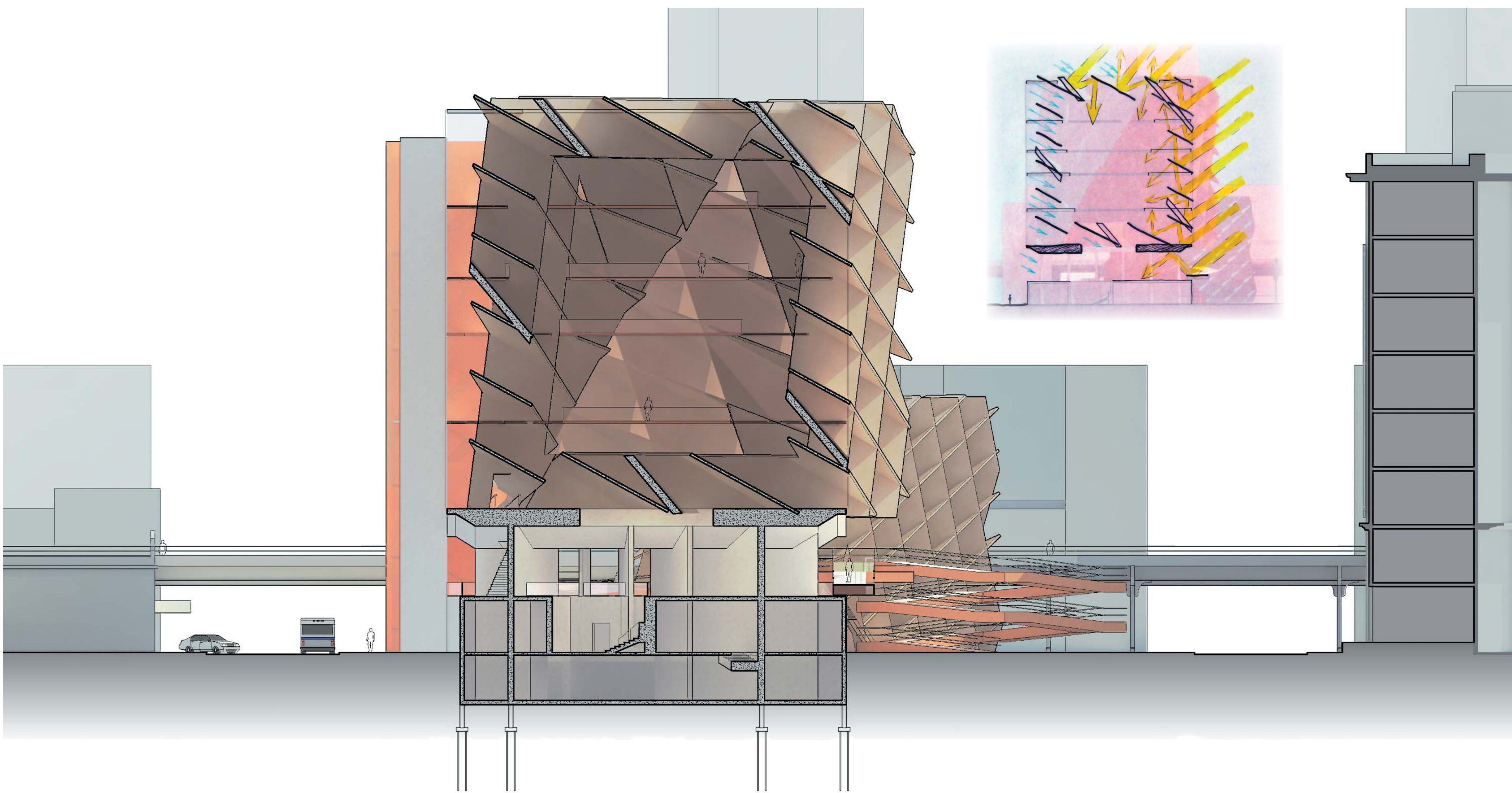
Sol LeWitt, as the curator, has inspired the design as well through his explorations of geometrical construction; after all, the museum is broken down into two identical cubes: yes, they are oriented in opposing directions, but their abstraction into a network of canted fins allows for this identical geometry to serve a different purpose in each condition. The smaller, nearer cube to the High Line is an open shadow gallery through which pedestrians enter from the public park; what light it blocks dances upon the framed court below. The larger cube positioned further away evenly diffuses southern light while allowing ambient northern light to filter in, providing an even environment for projection.



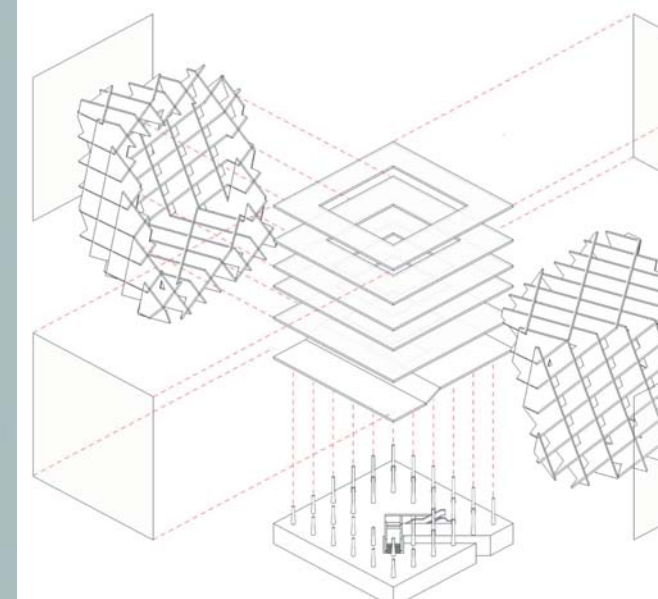
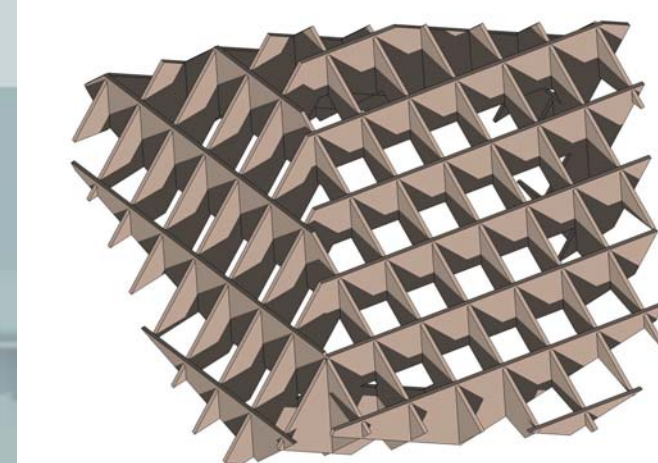
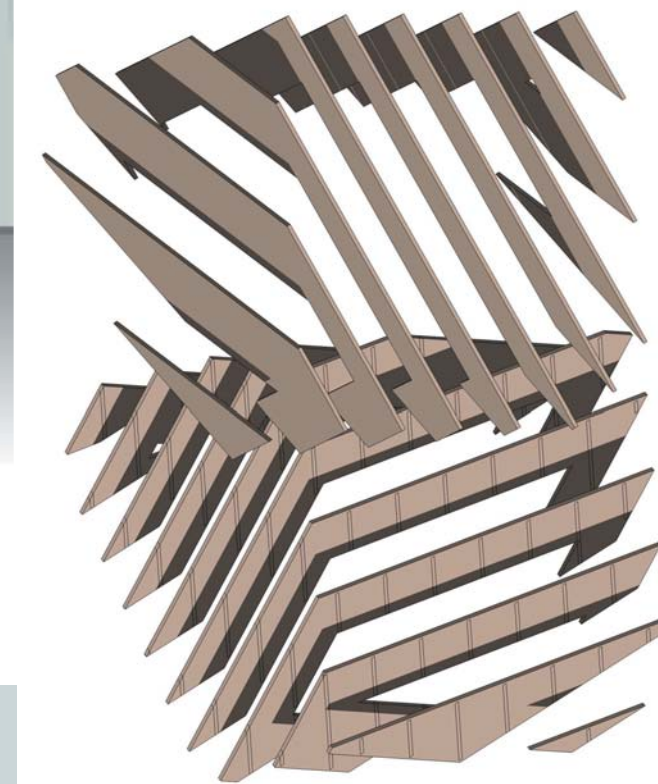
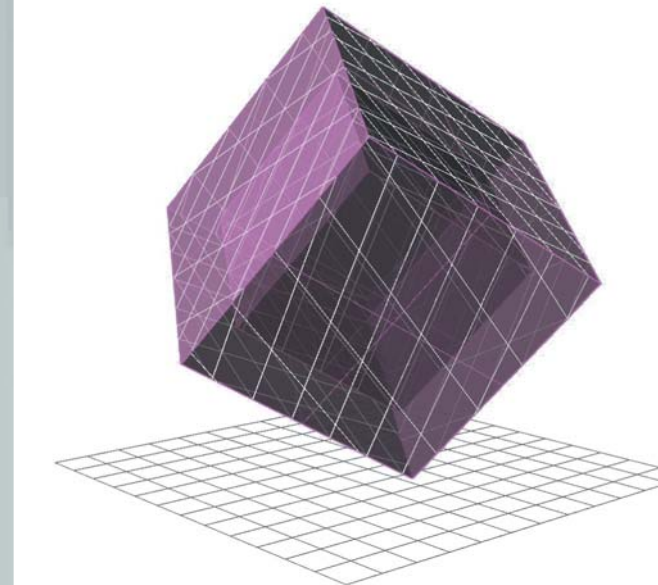




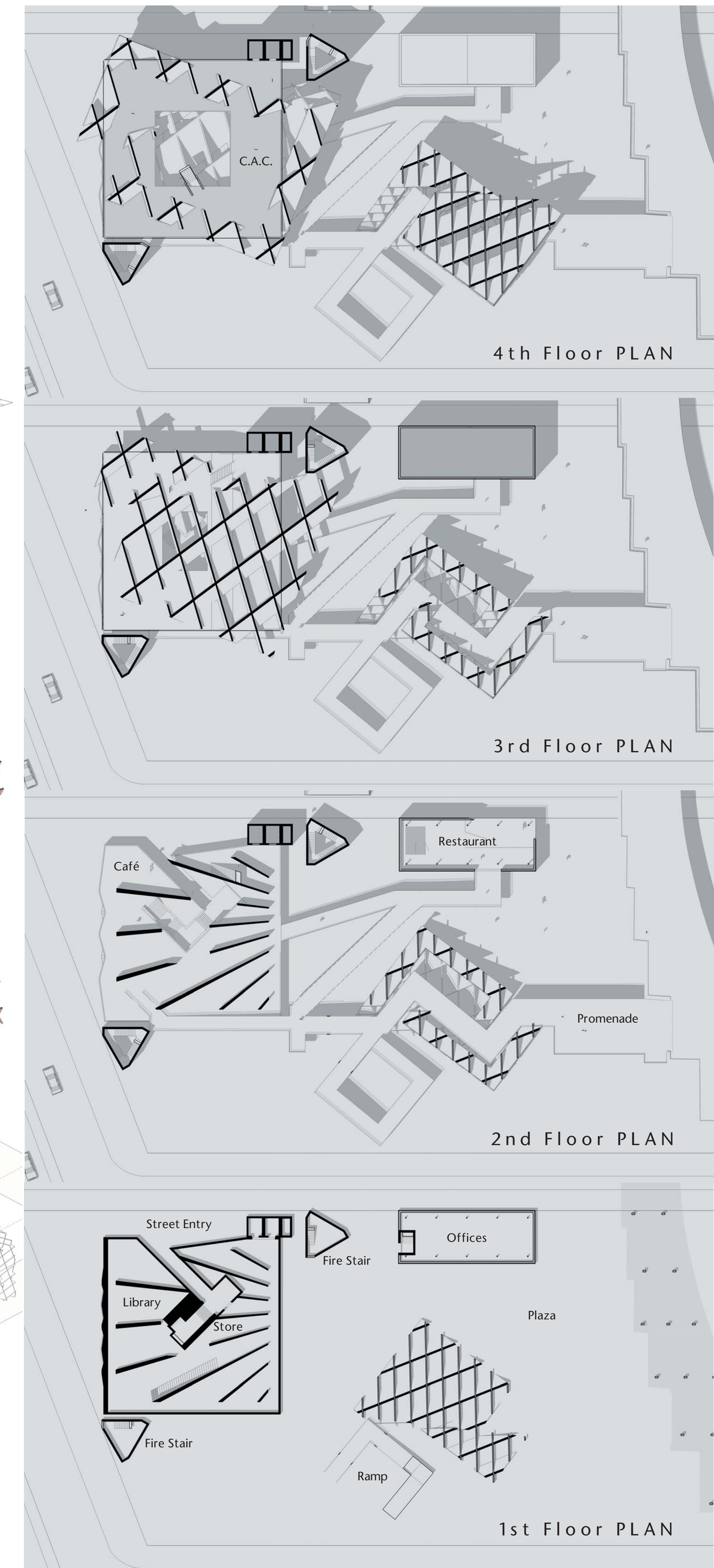
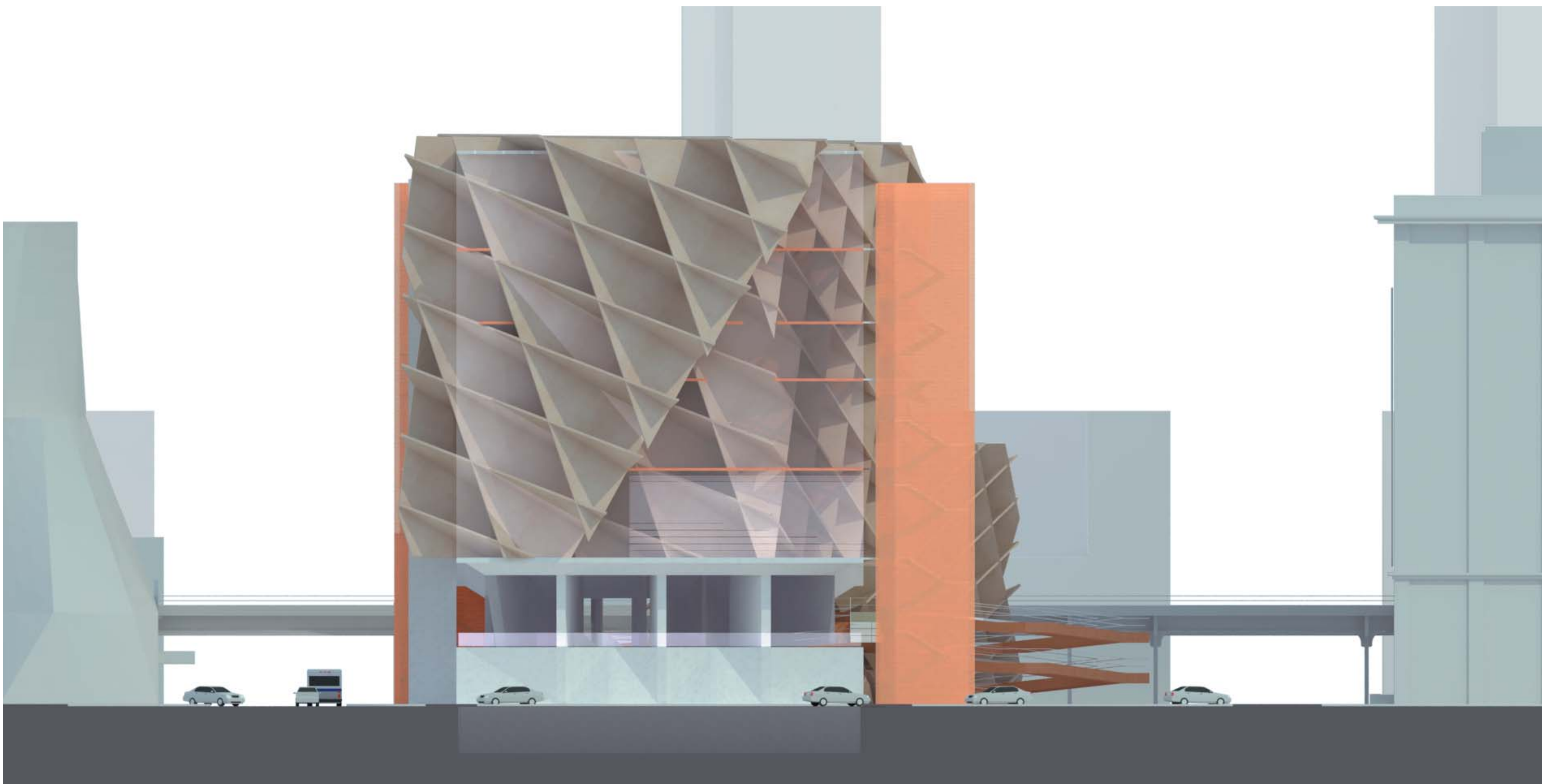




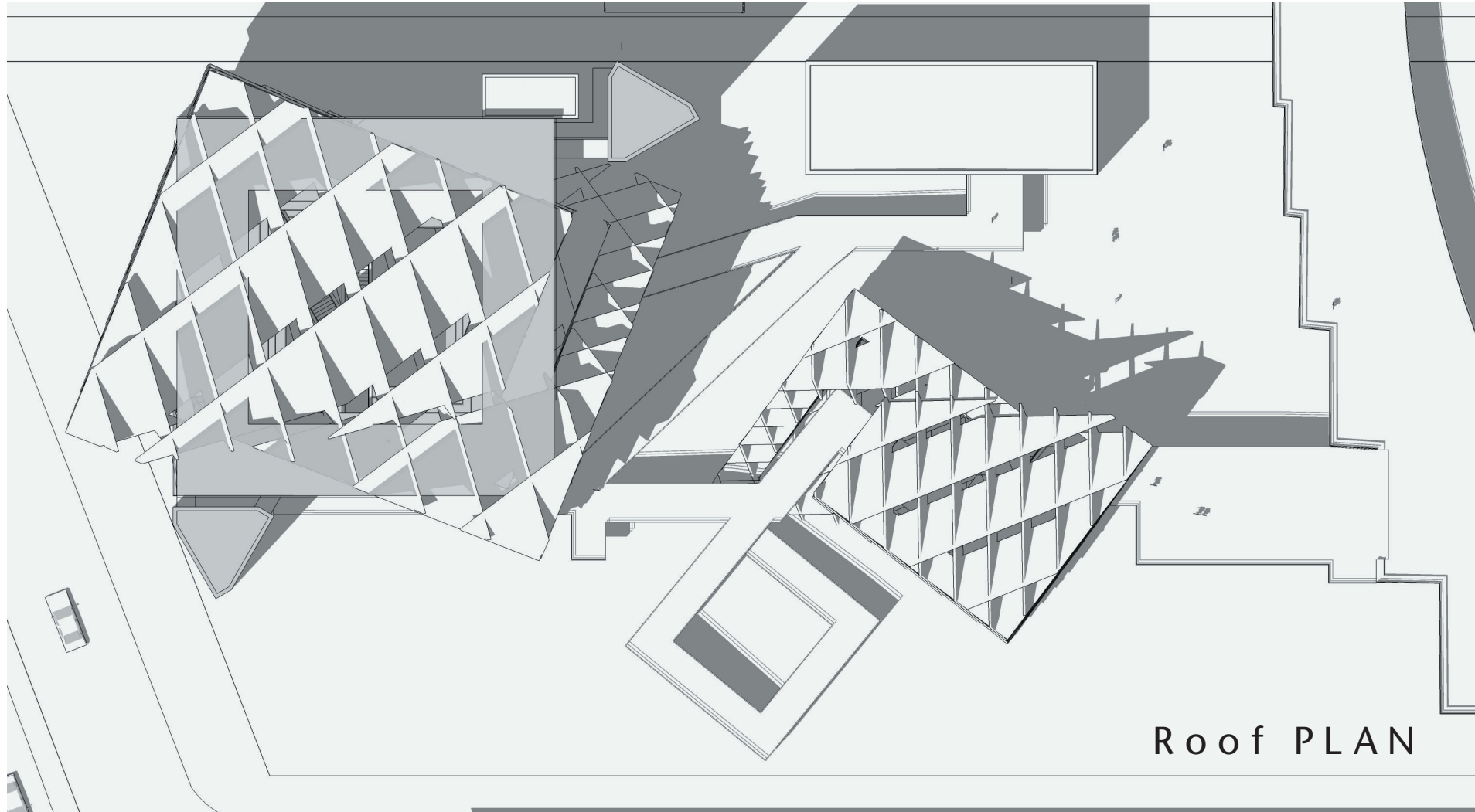
A cube is abstracted by rotating 30° in three directions, then slicing through with a regular grid. Offsets and shifts further distance the museum's geometry from its platonic form.



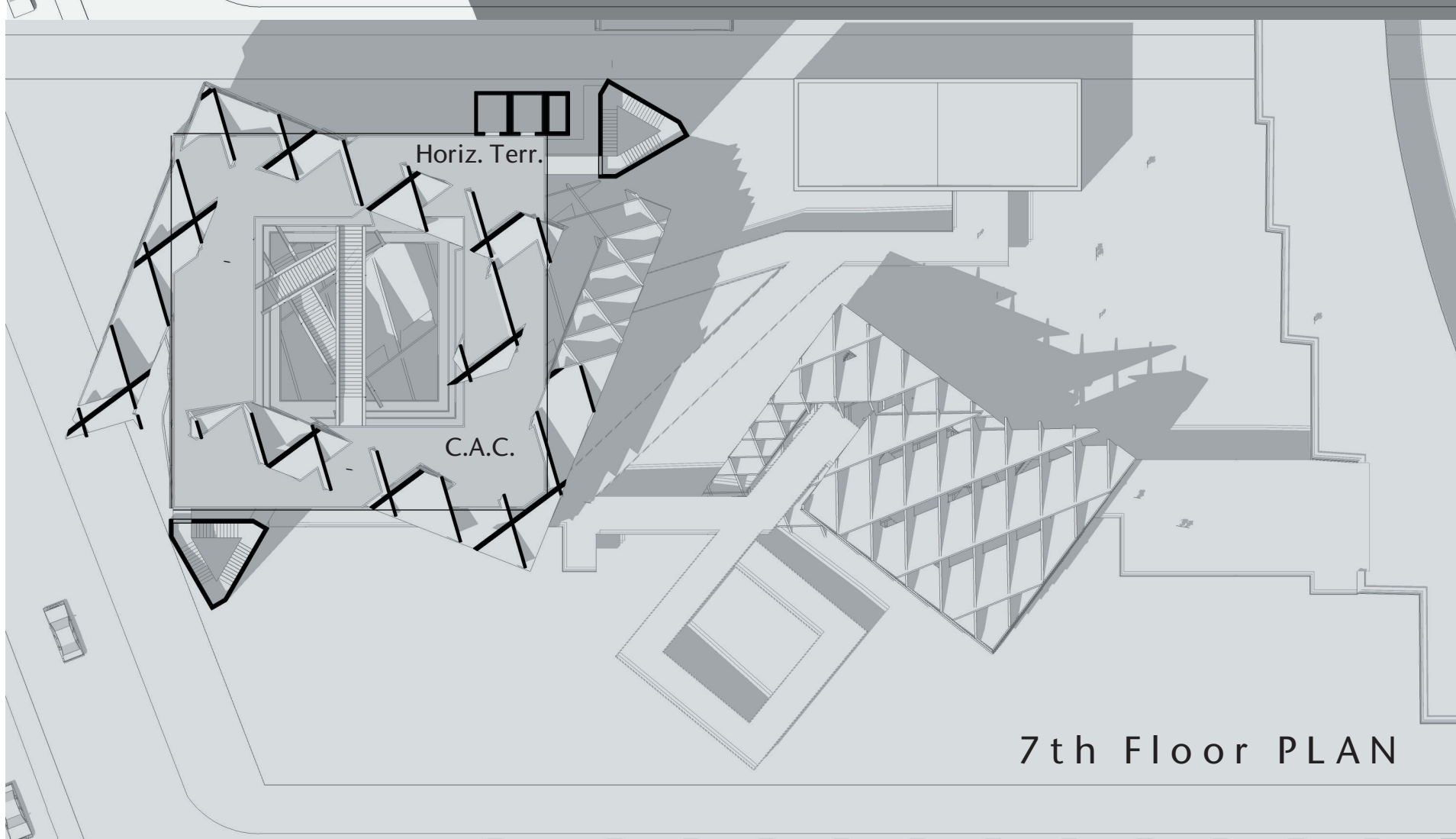
Precast concrete gridwork is shipped in and assembled by crane on site, grouting adjacent sections together over exposed rebar. Steel floor systems are welded or bolted to planned connections in the concrete, then overlaid with a heavy duty expanded metal mesh.



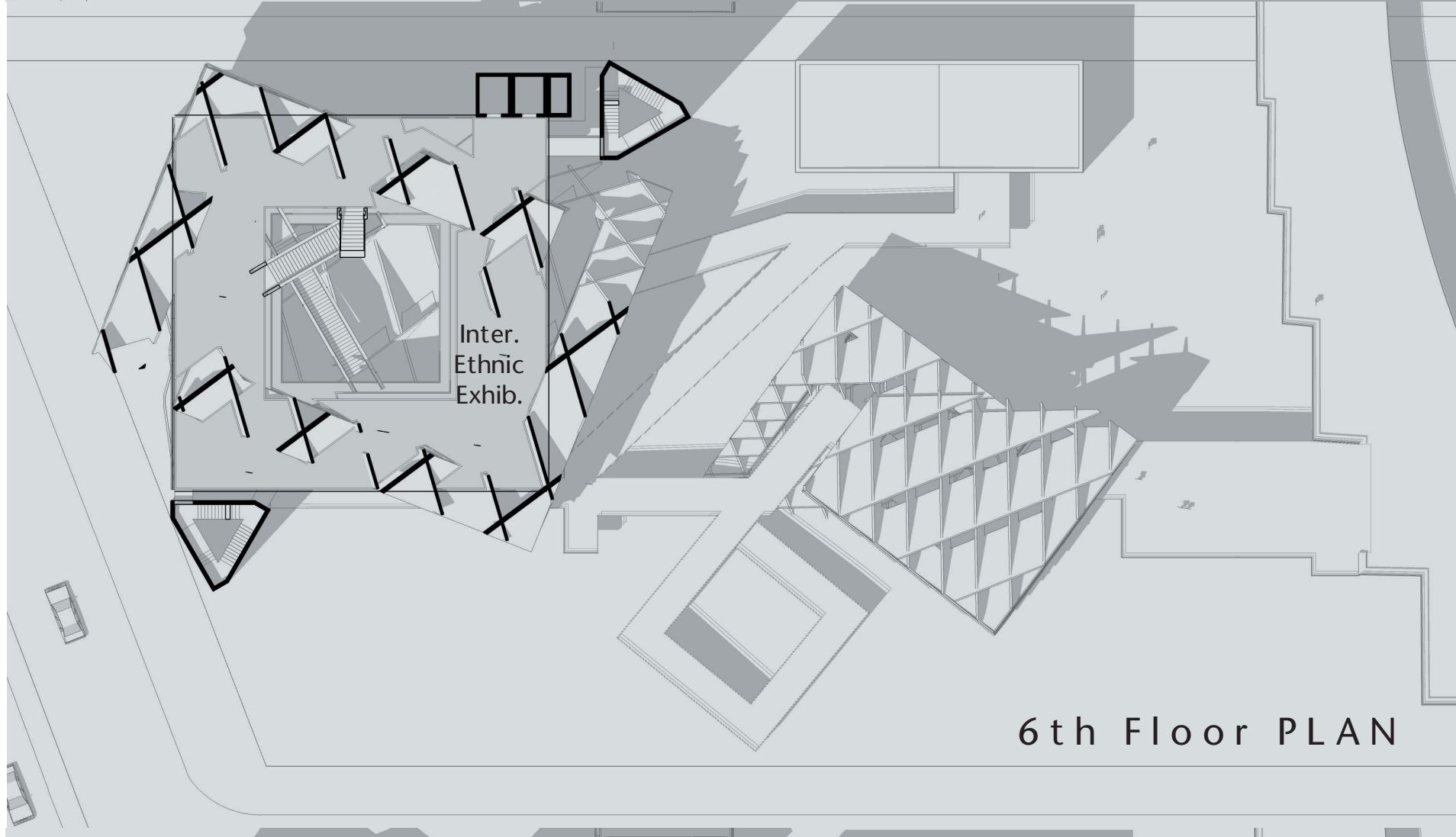




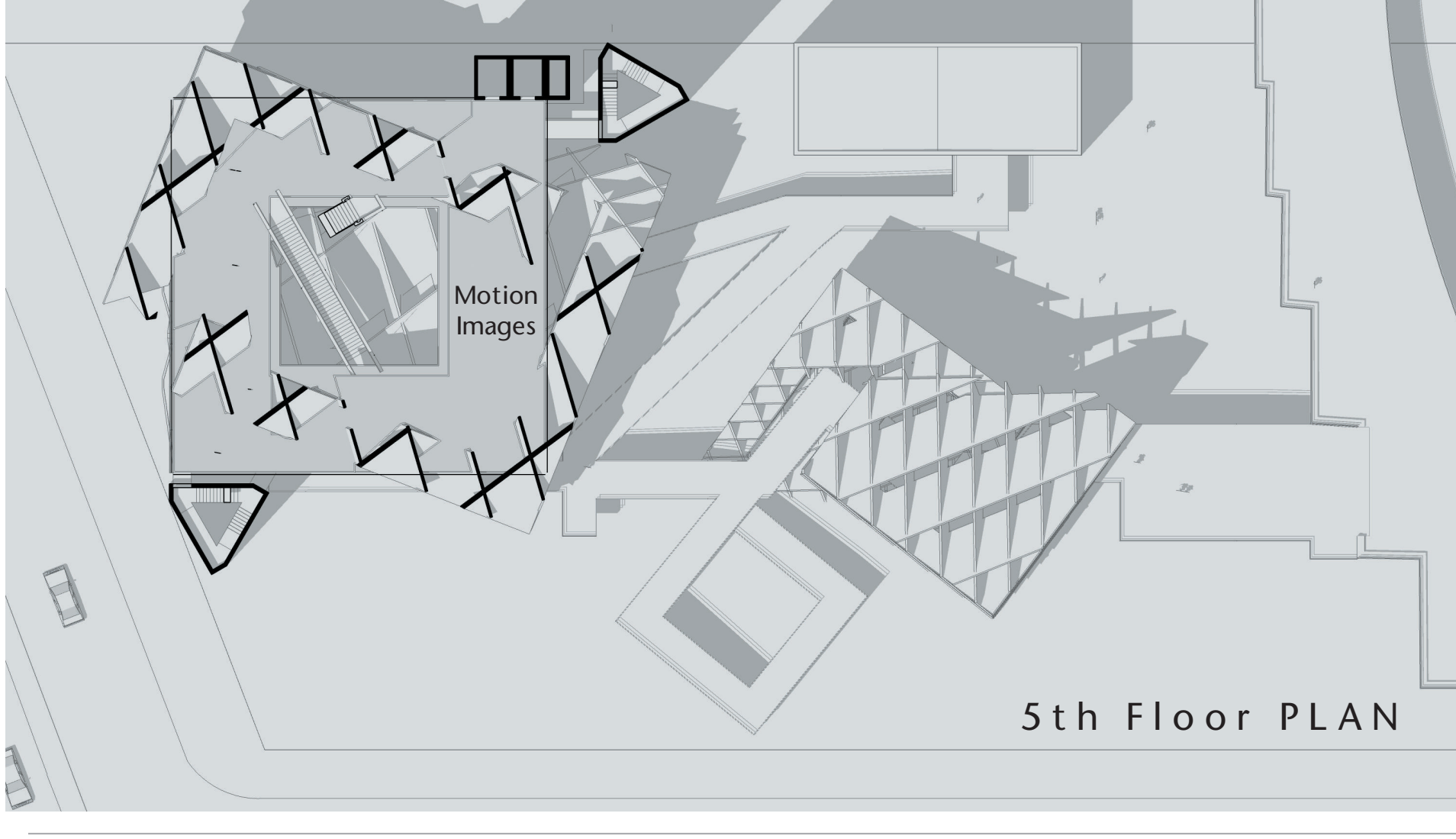
Roof PLAN



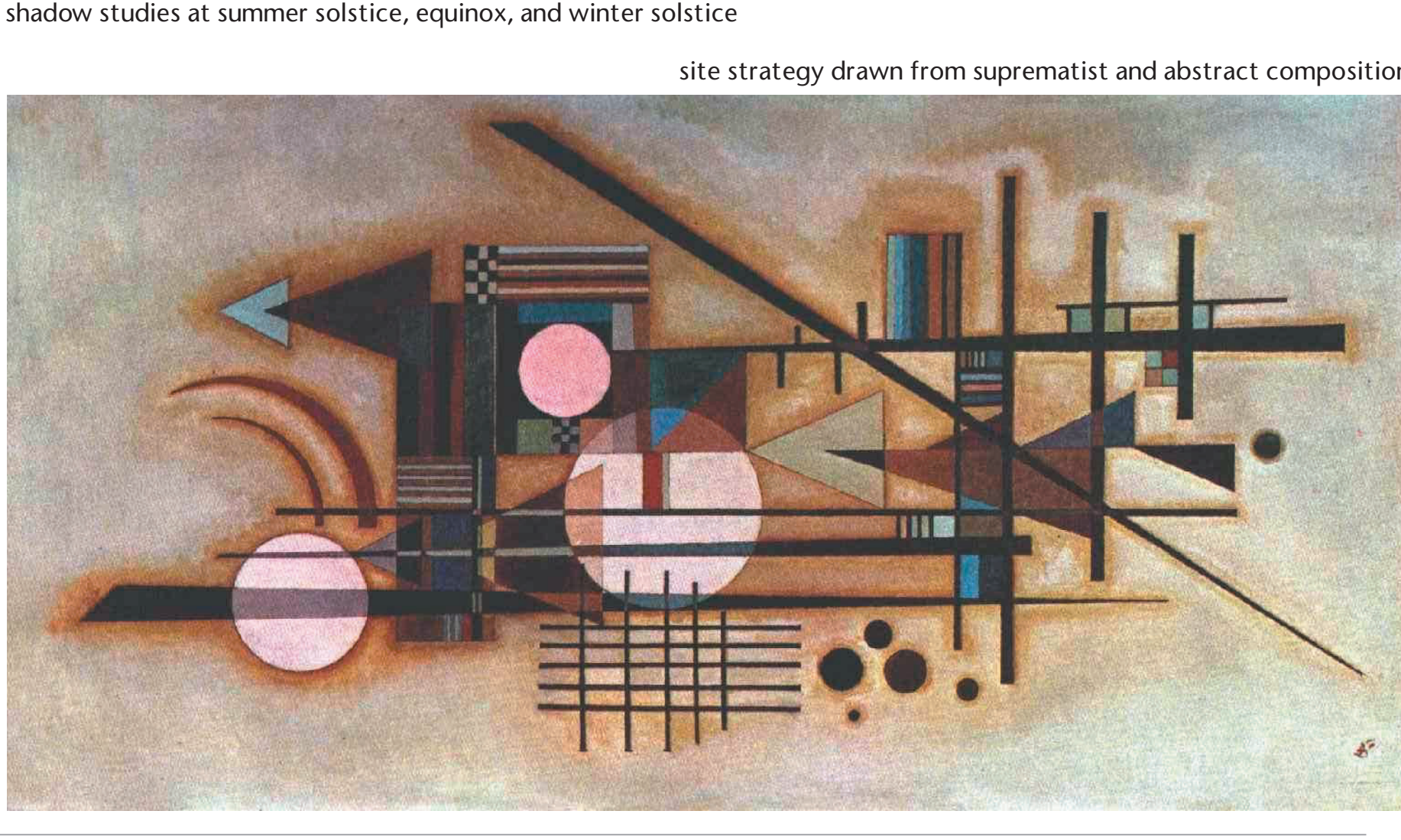
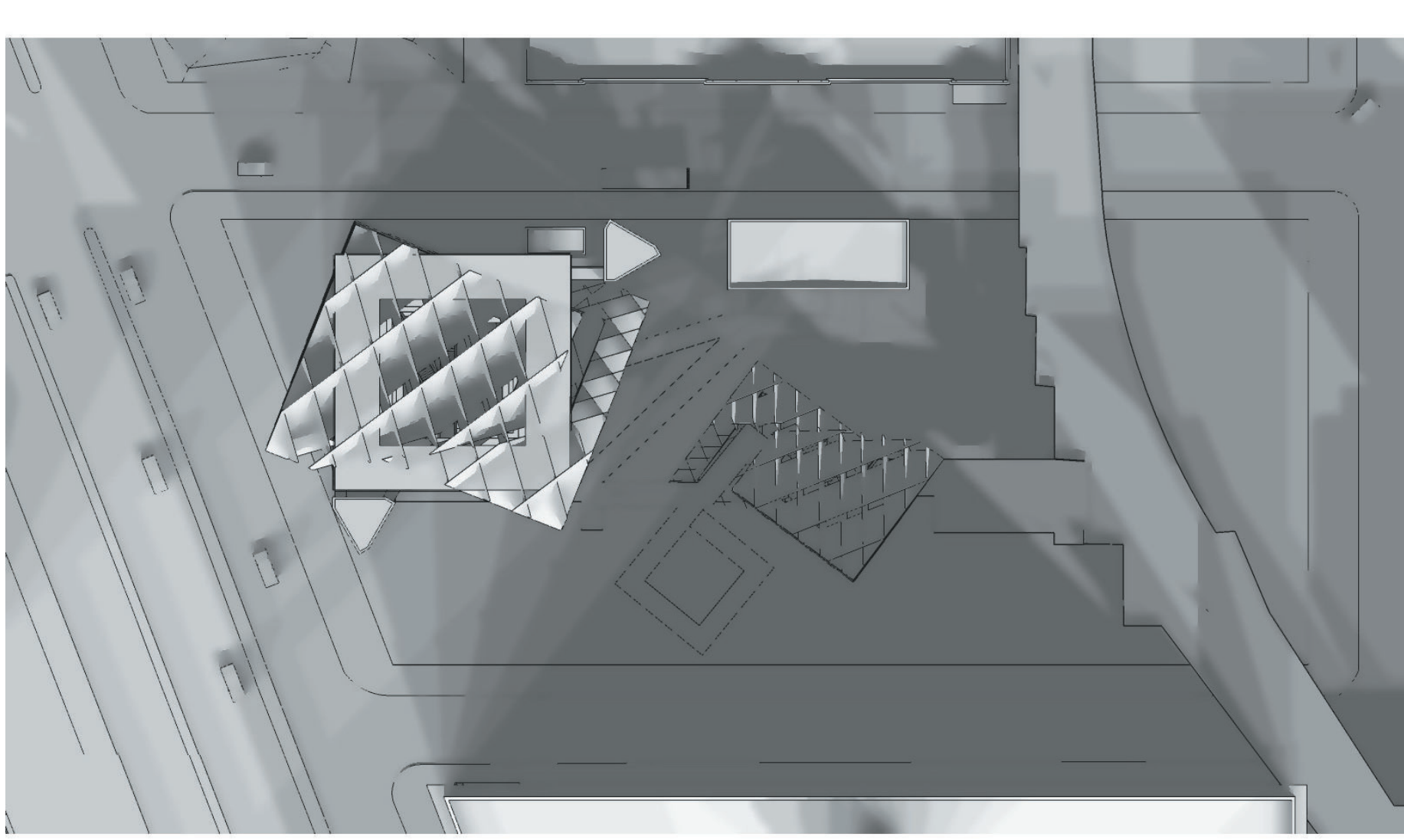
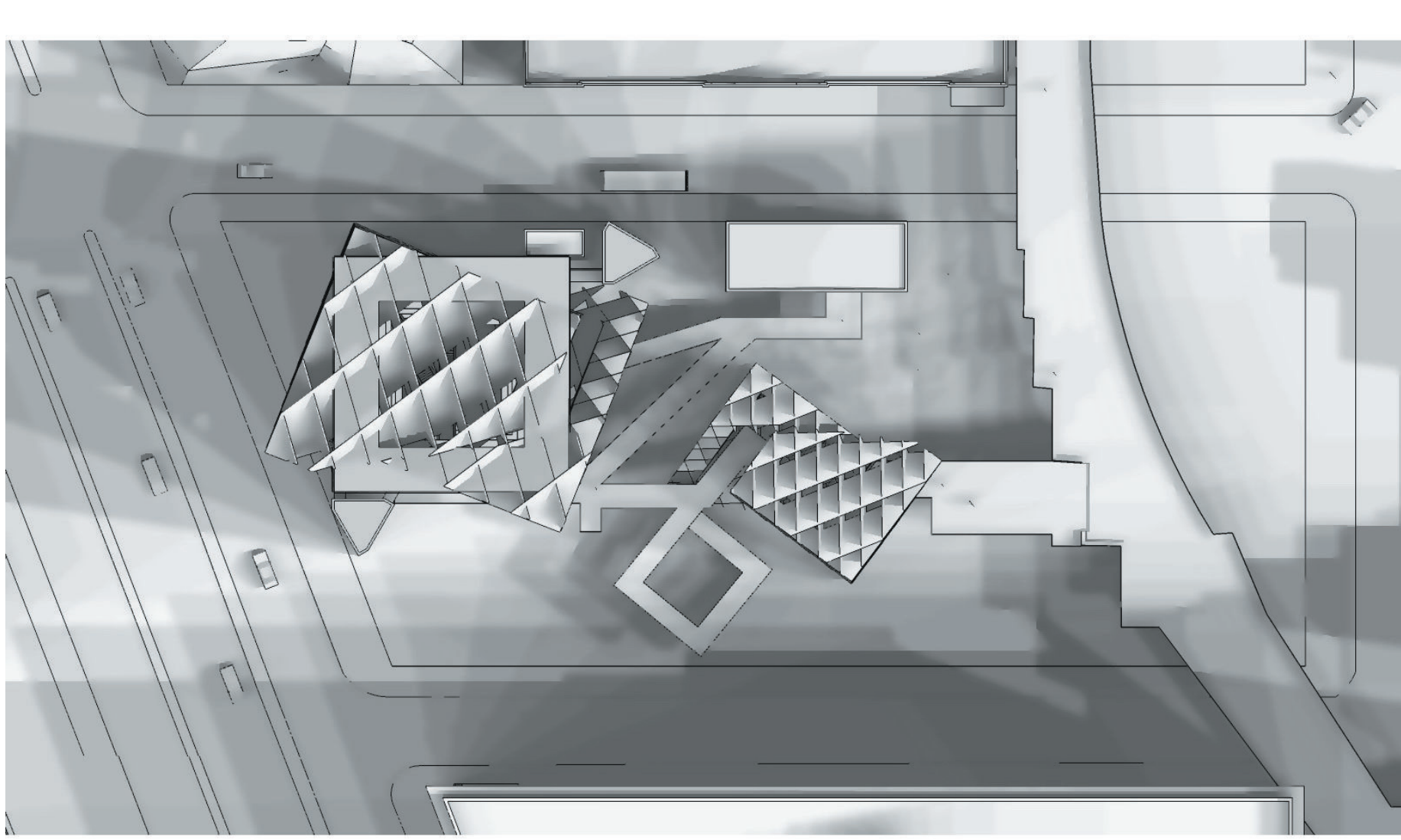
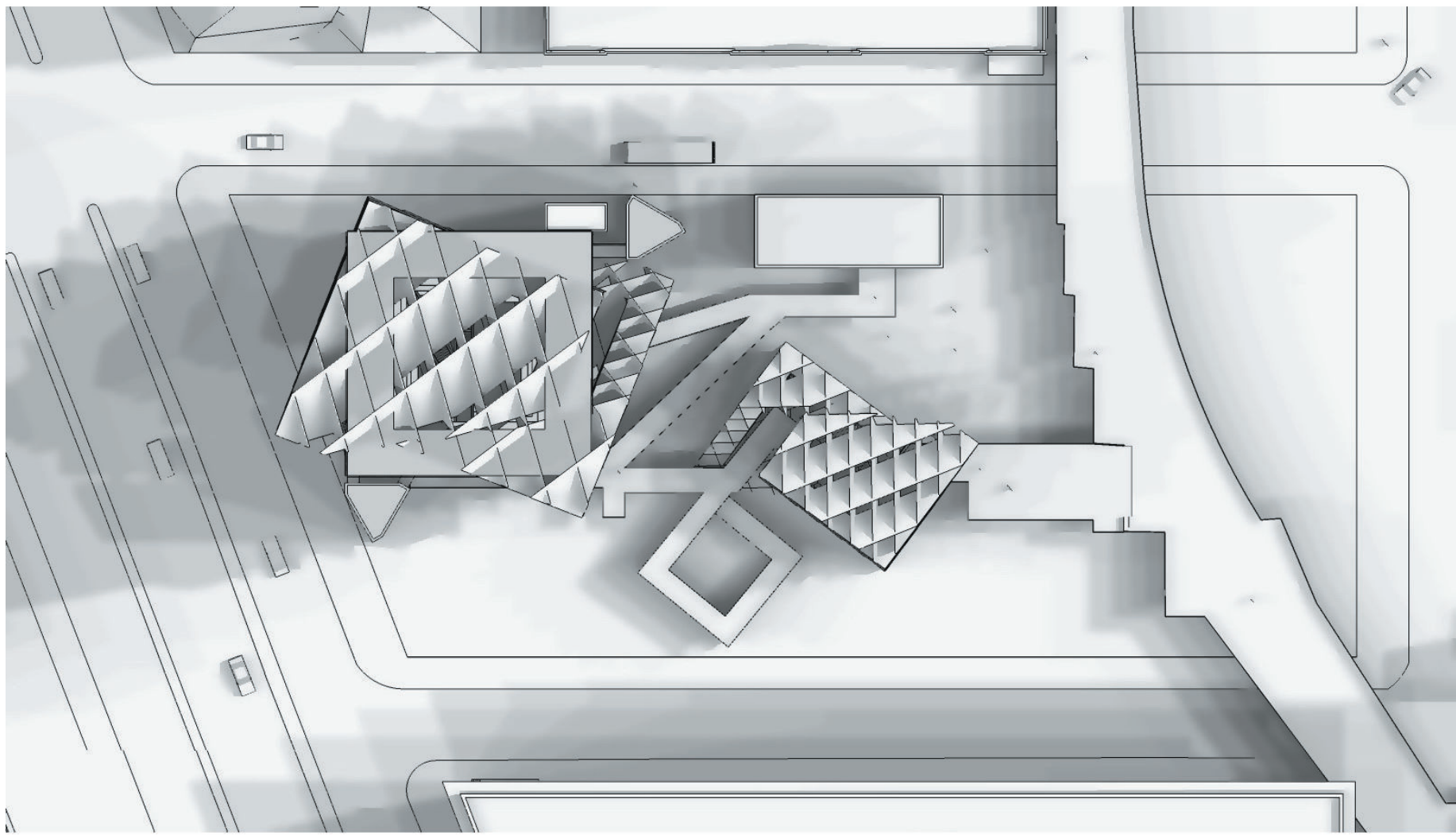
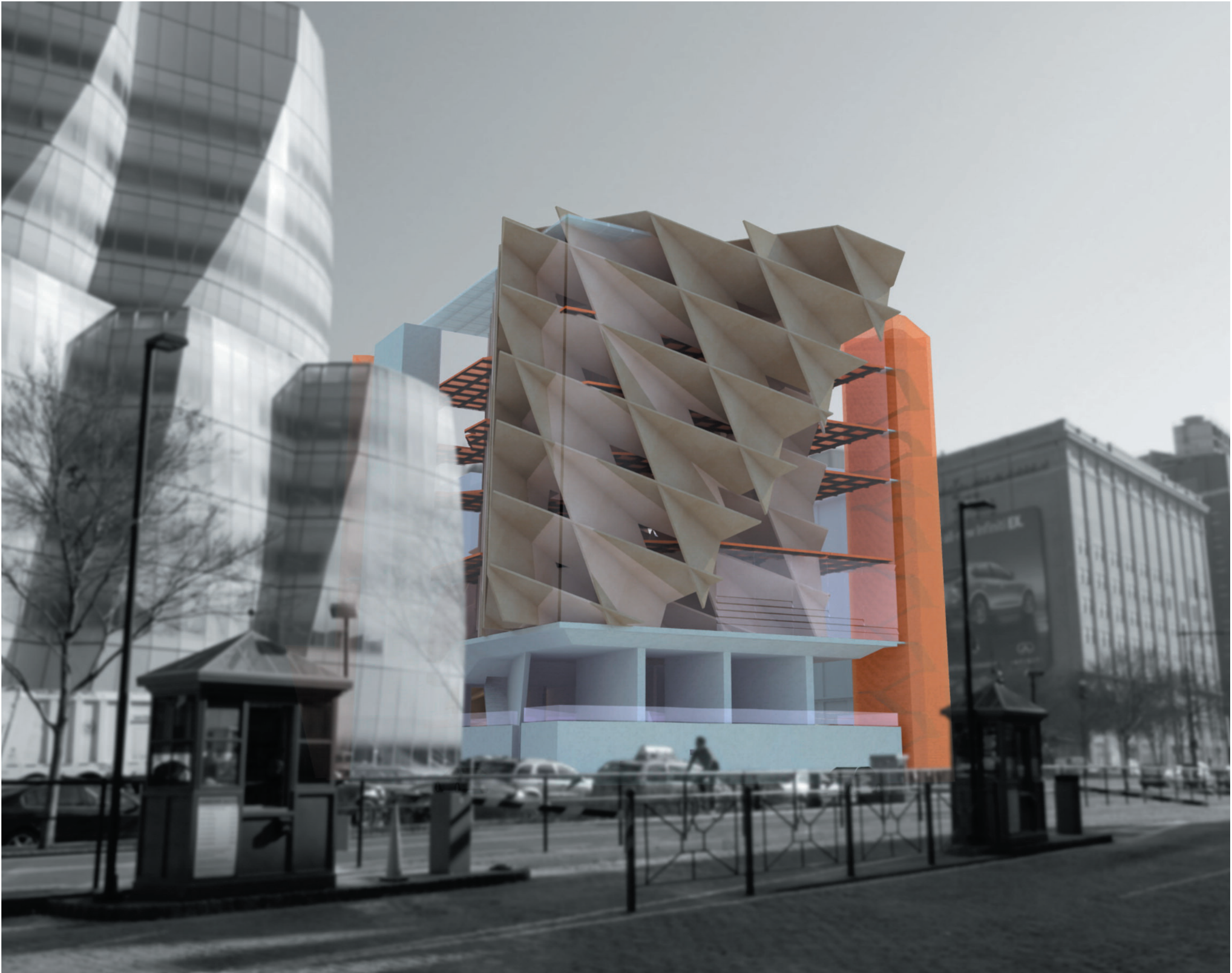
7th Floor PLAN



6th Floor PLAN

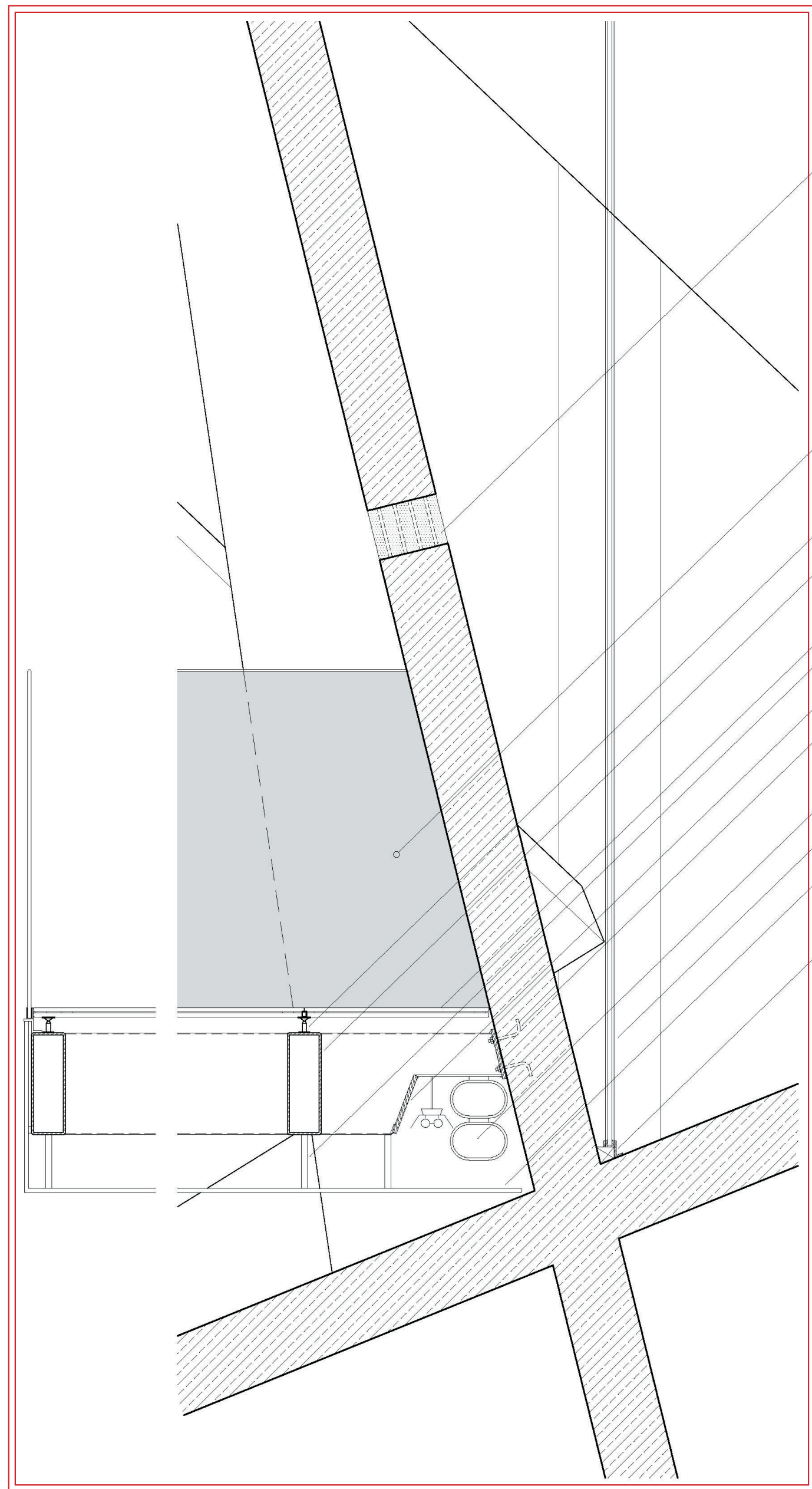
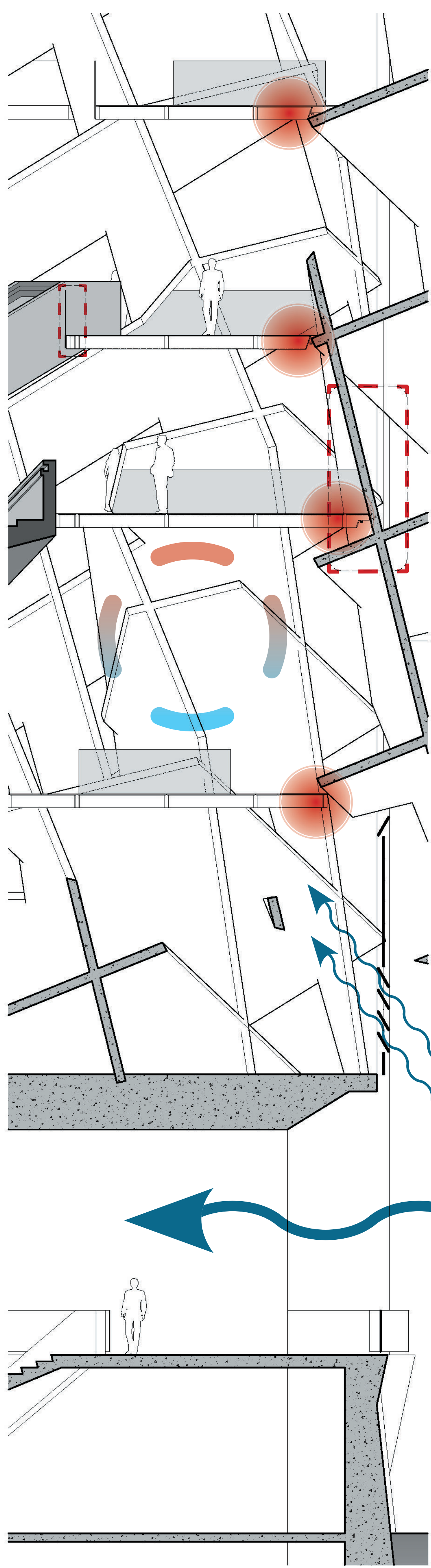
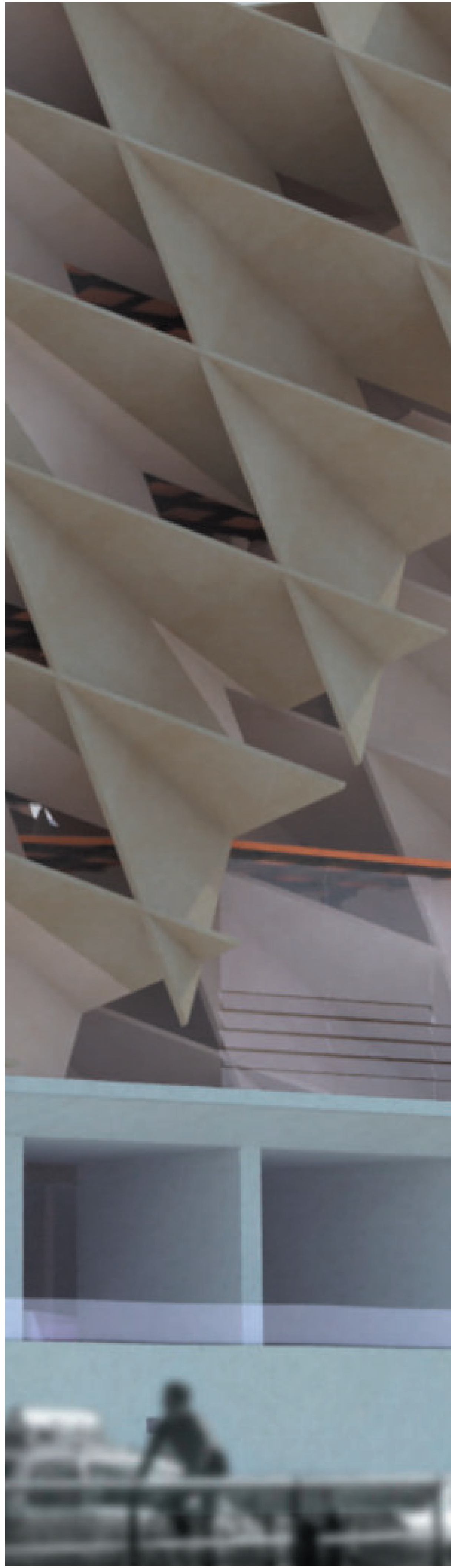
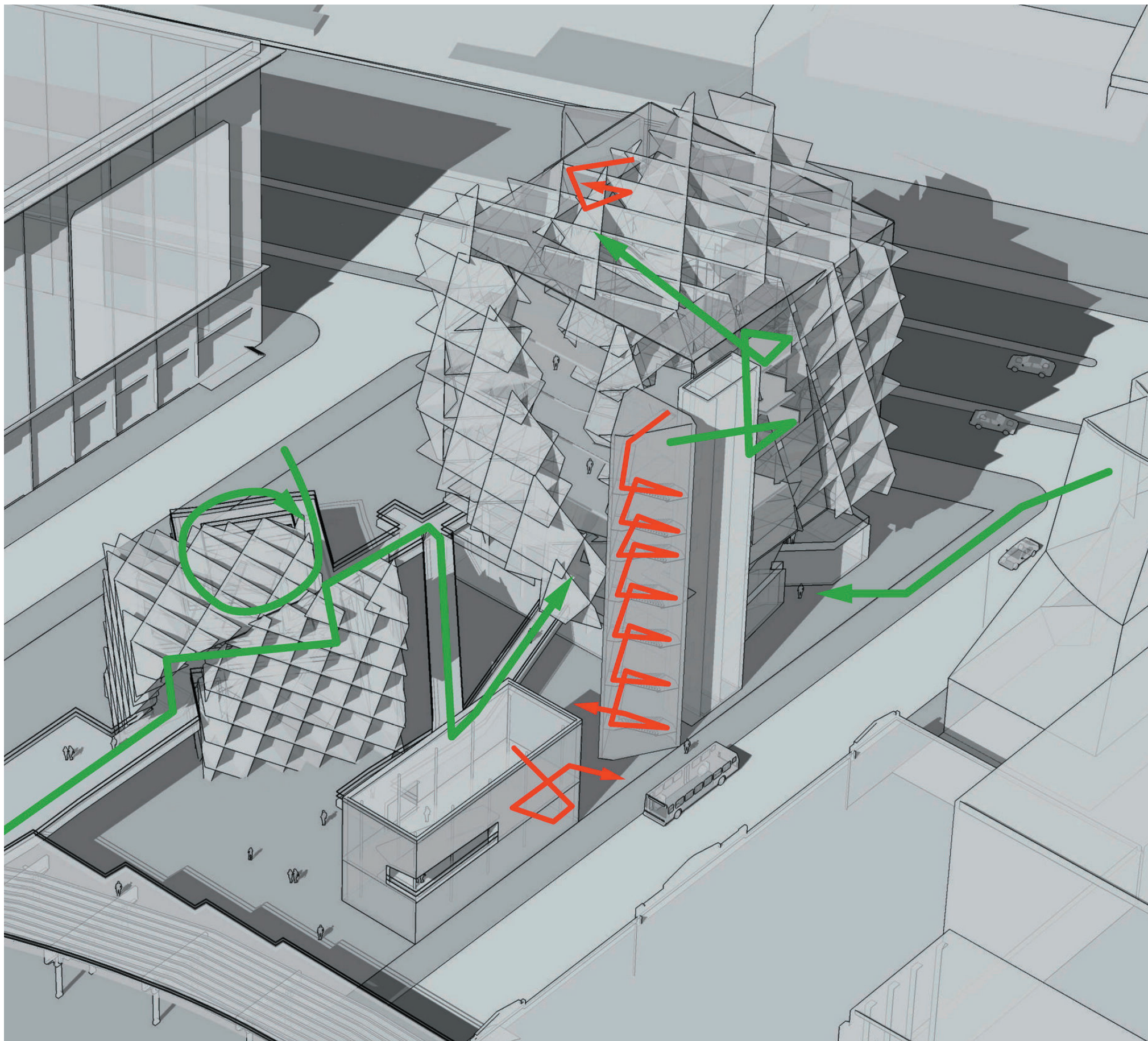
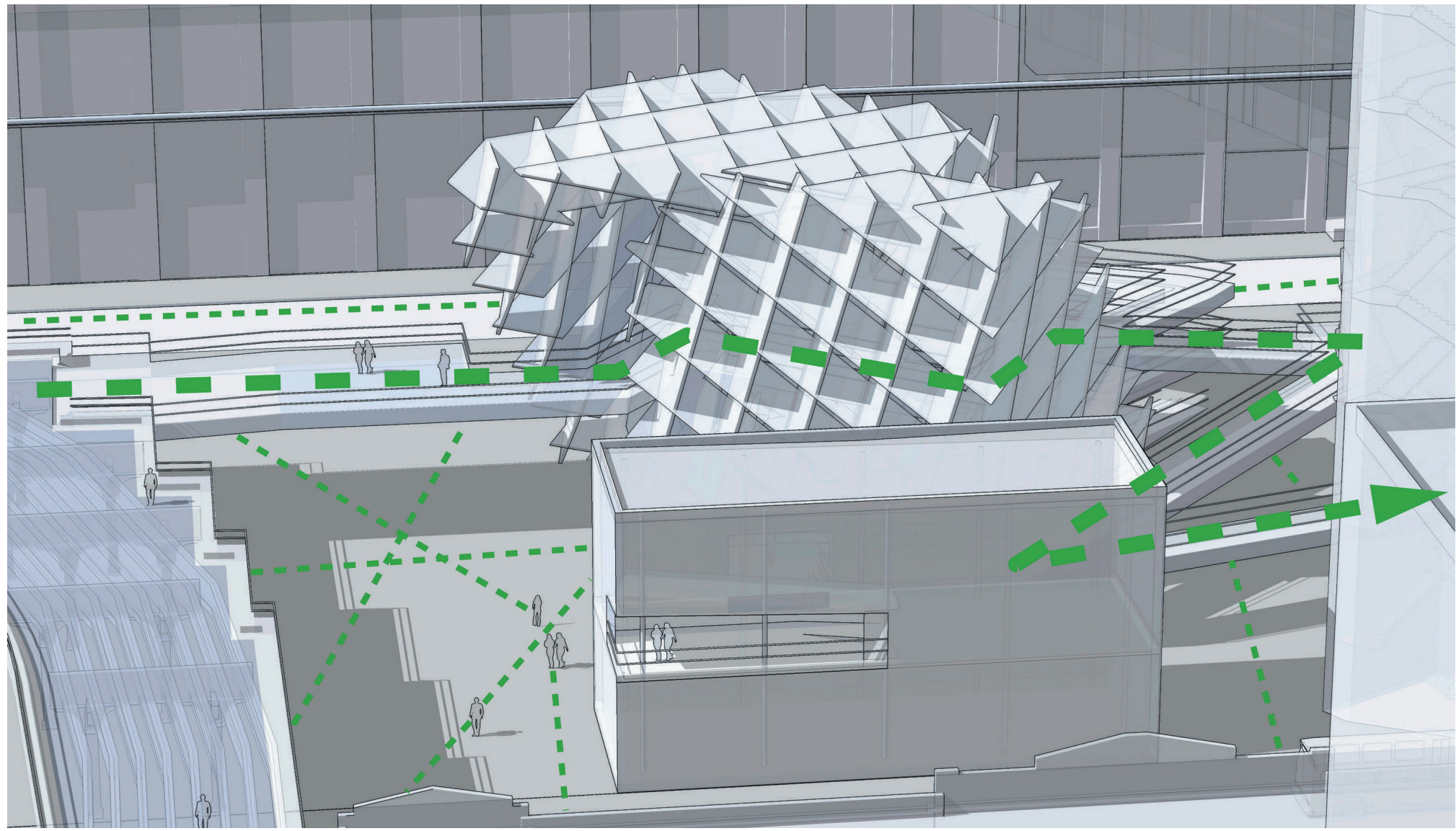


5th Floor PLAN



shadow studies at summer solstice, equinox, and winter solstice  
site strategy drawn from suprematist and abstract composition





- pre-cast concrete sections with 4-wide #6 reinforcing steel bars welded, grouted and finished to match surrounding concrete
- 1/2" tempered glass
- linear joist for elevated floor
- 12x4x1/4" structural steel tubing
- heavy-gauge expanded steel mesh
- hangers for suspended ceiling
- 1/2" steel plate closing off section
- steel tubing welded to 1/2" steel plate, bolted into concrete
- HVAC return & diffuser, 2500 CFM
- 2 x 1/4" tempered glass with 1/2" vacuum in between
- single layer of galvanized expanded steel mesh to conceal HVAC & warm fluorescent lighting
- 1.5" x 2.5" galv. steel clip angles to form window frame, following concrete angles on exterior

